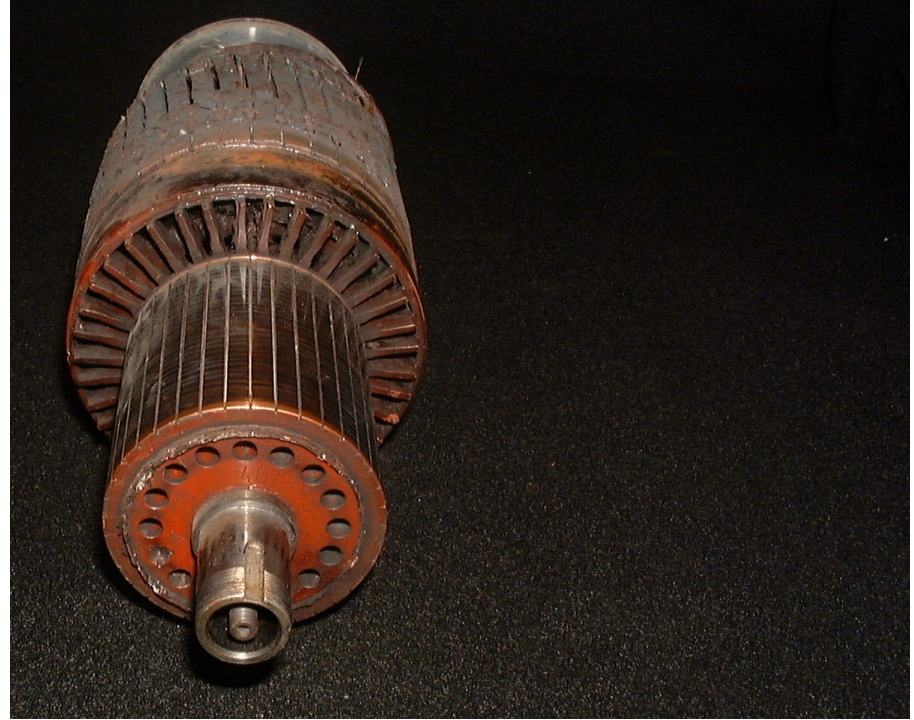


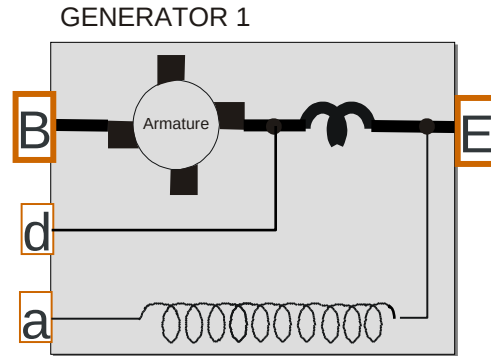


Auxilec Starter/Generator Reference Information

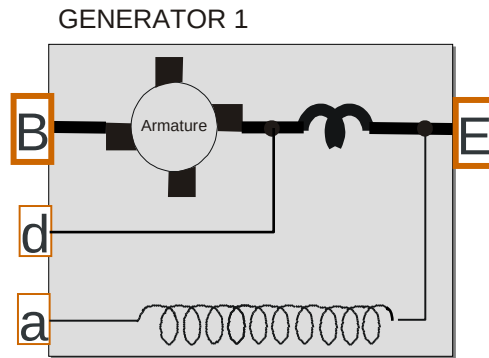
- 1500 Amps Momentary during start
- 600 Amps momentary output
- 300 Amp continuous output



Auxilec Starter/Generator Reference Information

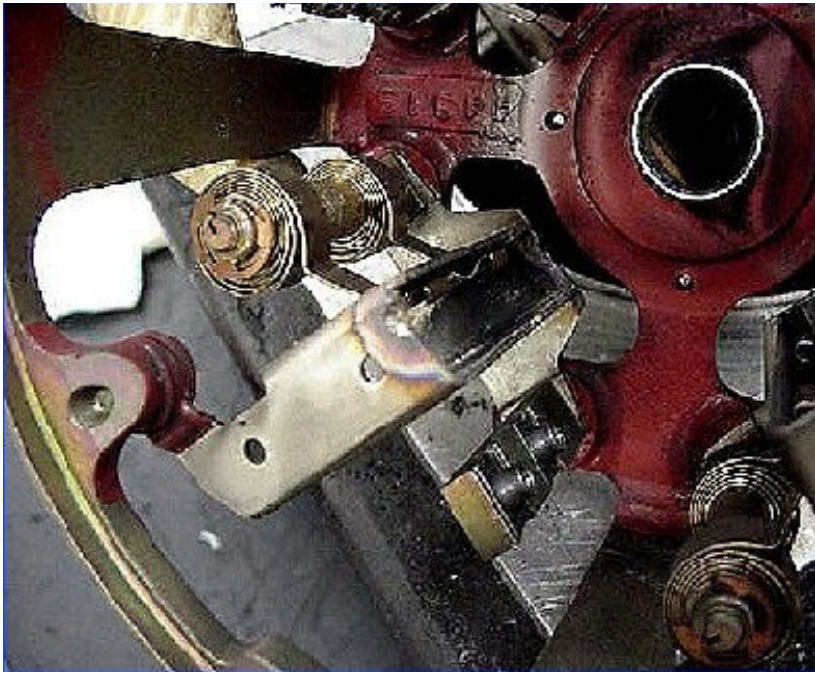


- **Field Resistance (a to E)**
 - 2 Ohms to 3 Ohms, Decrease over time due to Overheating, insulation shorting.
- **Internal Resistance (B to E)**
 - <1 Ohm in service, increases over time.
- **Insulation Resistance (Any wire to the case)**
 - > 1 meg (use LOW VOLTAGE megger)
- **Resistance Check (d to E)**
 - Should be $\frac{1}{2}$ of B to E
- **Brush Spring Tension**
 - Approx 4.25 Lbs, all springs must be similar



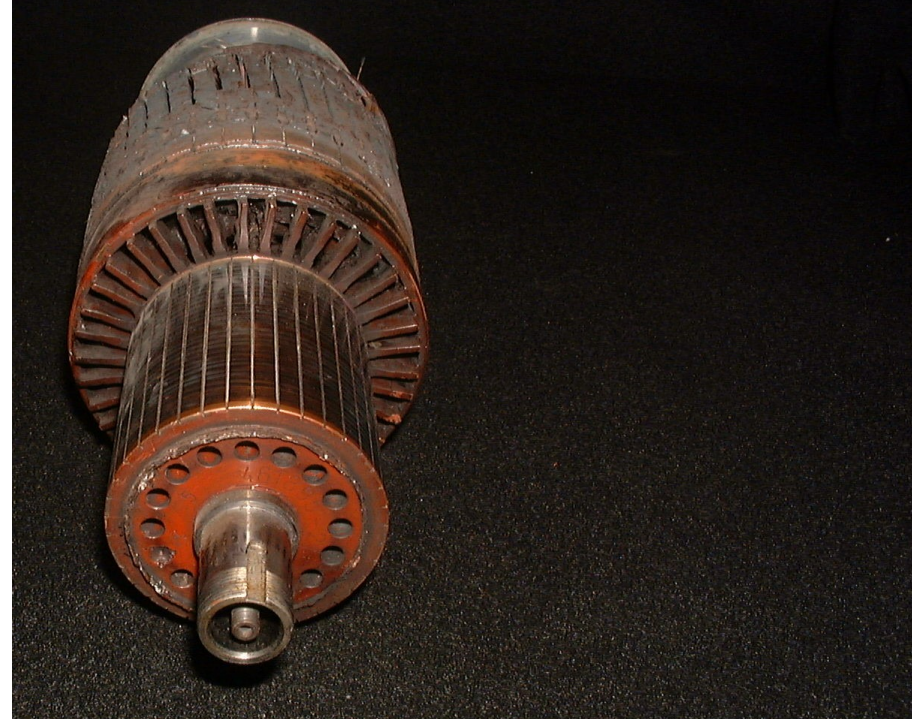
- **Residual Voltage (B)**
 - .8 vdc to 1.5 vdc
- **Reference Voltage (d Voltage)**
 - (B output in amps/ 300 = d voltage)
- **Ripple Voltage**
 - < 1 volt
- **Field Voltage (a Voltage),**
 - 14v at initial start dropping to 8v at N2 20%

- **ABOVE ALL ELSE..... Double check a and d wiring**
- **DO NOT use a megger for insulation check**
- **Do not rotate starter backwards**



Common damage results to Auxilec generator

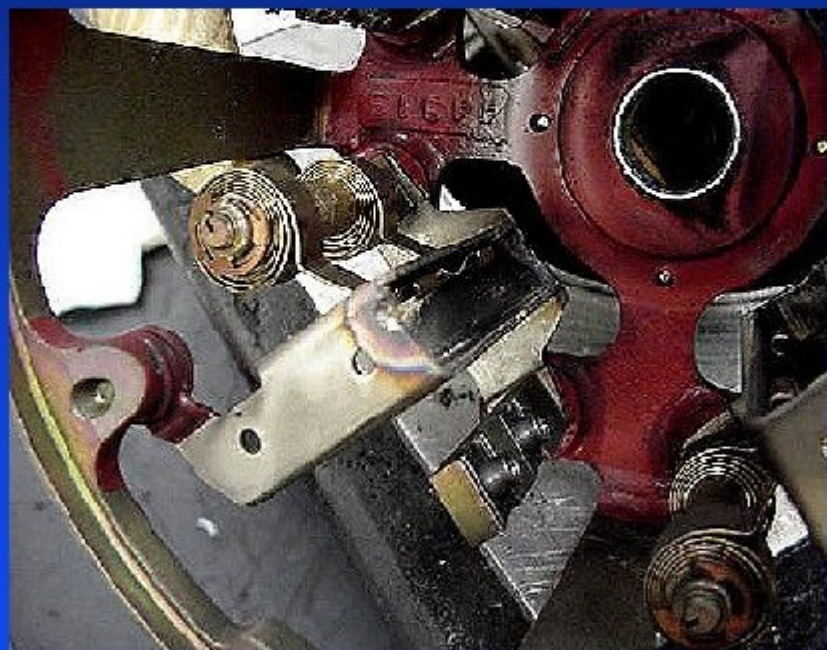
- a lead termination
- Brush housing arcing
- Heat damage
- Desoldering
- Shock damage
- Fod
- Frangible drive / Alignment pin





Falcon 900 / 900EX

Starter-Generator P/N 8060-150

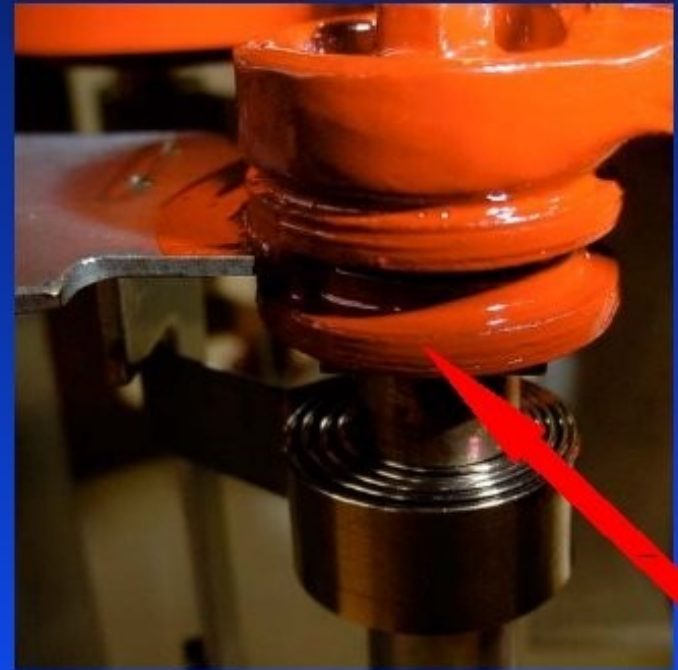
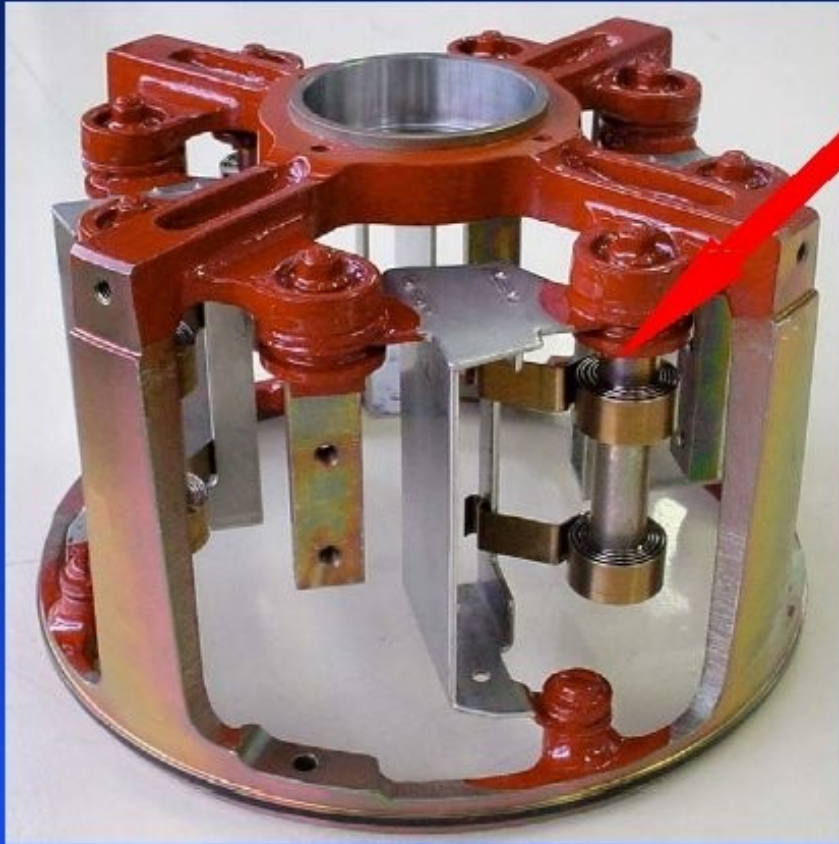


- Operators requested Higher TBO.
- -141
 - 150FH brush check,
 - 450FH brush replace,
 - 900FH O/H
- -150
 - 450 FH brush check
 - 900FH Overhaul
- -160
 - 600 Brush check
 - 1200FH O/H

New 8060–160 improvements

New Starter-Generator P/N 8060-160

New end bell housing with spring axes insulated



New Brush box housing

New Starter-Generator P/N 8060-160

**New bearings designed in collaboration with bearing manufacturer for improved performance margins as related to S/G specifications
=> Temperature, Load, Speed and Vibration**



- ✓ High precision grade (ISO class C5)
- ✓ High thermal stabilization grade (200°C)
- ✓ High performance grease (288°C)
- ✓ New viton (fluorine) seal (240°C)
- ✓ Better traceability ⇒ each bearing is serialized, inspected and delivered with an inspection form

NSK BALL BEARING INSP. RESULT								
Backs No.	B320050L				Pets No.	02-148		
					Inspector A. Nakamura			
					Unit - mm			
ITEM	Out Side	Bore	Outer Ring		Inner Ring		Side Runout with Bore	Radial Clearance
	Diameter	Diameter	Radial Runout	Axial Runout	Radial Runout	Axial Runout		
INSP. RESULT	-2	-4	1	1	1	1	1	10
NSK Ltd.								



Maintenance Improvements on S/G 8060-150/-160

Information:

■ Maintenance improvements:

- *Performance follow up / operational survey has allowed to refine the criteria for brush change / repair*

Required action:	Previous	New
Brush replacement	17 mm	16 mm
S/G repair	9 mm	7 mm

- *AMM TCs scheduled June 2004*

Maintenance Improvements on S/G 8060-150/-160

New Brush Measurement Tool P/N P611527

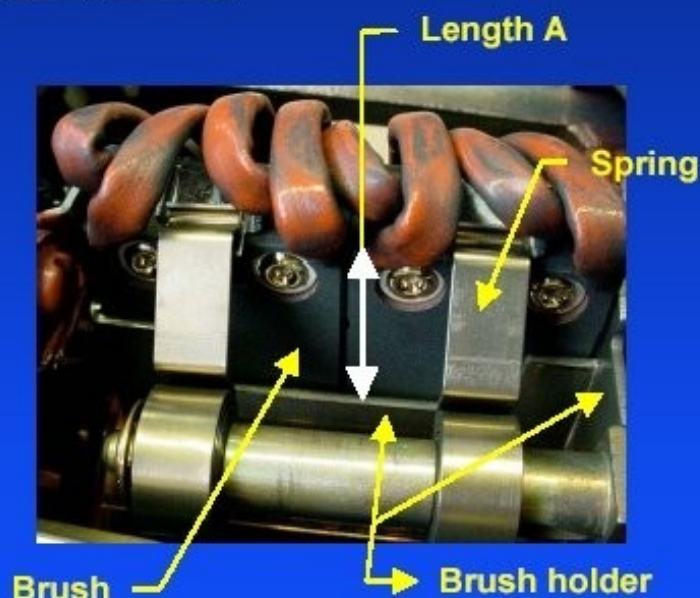


✓ New brush \Rightarrow length "A" = 26 mm

✓ If : "A" \geq 16 mm \Rightarrow no action until overhaul

✓ If : 7 mm \leq "A" < 16 mm \Rightarrow all brushes must be replaced.

✓ If : "A" < 7 mm \Rightarrow S/G must be sent to THALES approved repair network for evaluation and overhaul



Maintenance Improvements on S/G 8060-150/-160

Information (Cont'd):

- **Brush replacement by using standard set of tools, a spring holder and a brass nozzle blower**



✓ **Brush P/N P610355 (quantity = 8)**



✓ **Spring holder P/N P609579**



✓ **Wrench / screwdriver and/or torque wrench / screwdriver for screw P/N V300412D and washer P/N V0590405**

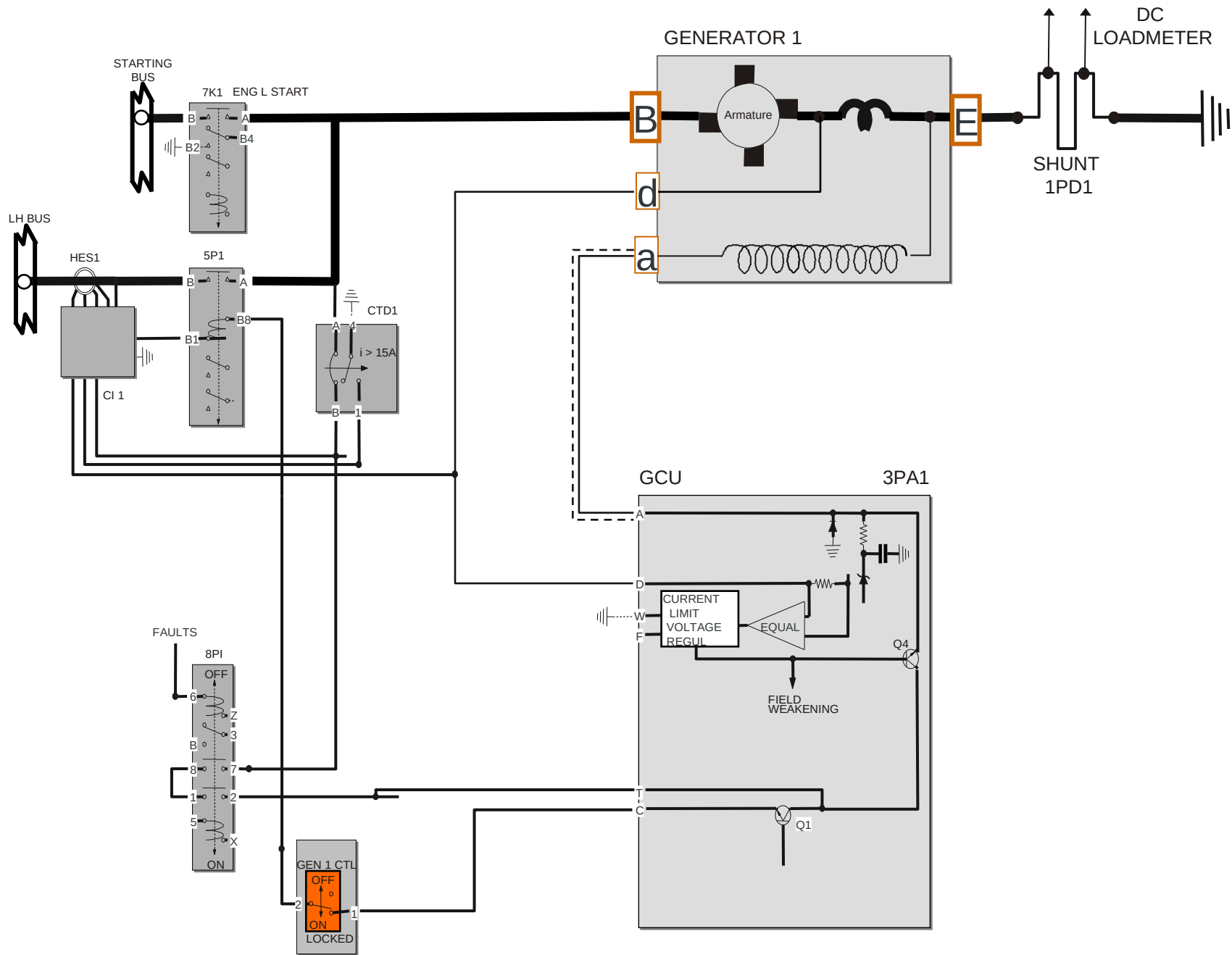


✓ **Brass nozzle blower P/N506277-1 or equivalent**

Maintenance on Starter-Generators

Information (Cont'd):

- **150 FH (+33%) longer intervals for brush checks and +300 FH between scheduled overhauls**
 - *Easier brush check – Free tool & video CD provided*
 - *Do it yourself ‘field brush change’ with confidence*
- **Full interchangeability of S/G P/Ns on aircraft**
 - *Operators can have upgrades performed on attrition*
 - *No need to have all Starter-Generators updated at once*
- **Take advantage of this life extending and cost reducing S/G modification**
- **Upgrade yours to the ‘latest and greatest’ through Dassault or Thales!**





Auxilec Starter/Generator Reference Information

- **ABOVE ALL ELSE..... Double check a and d wiring**
- **DO NOT use a megger for insulation check**
- **Do not rotate starter backwards**